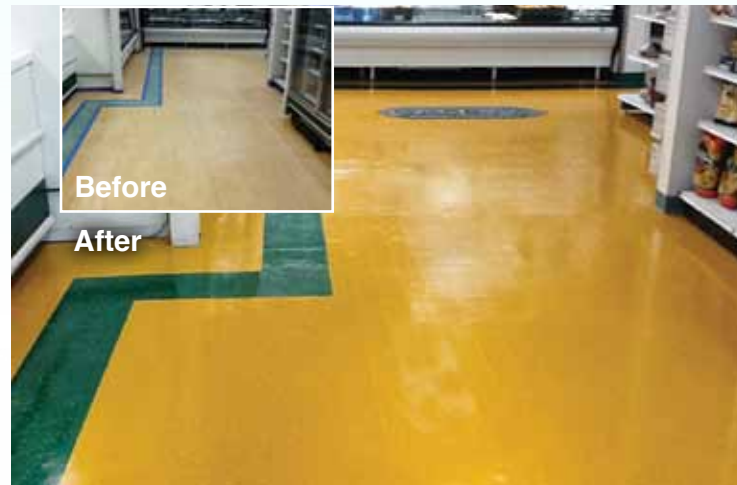


**Yanhill Carlton, Concrete**  
NeverStrip Color; Black



**Casey's Market, Luxury Vinyl Tile**  
NeverStrip Colors; Green and Yellow



**Graves Gymnasium, Poured Urethane Floor**  
NeverStrip Colors; Grey, Yellow, White, Red and Black

### NeverStrip Color Systems

NeverStrip Epoxy Primer and NeverStrip Color are used together with NeverStrip Clear Topcoats to provide attractive yet durable floor coating systems.

**NeverStrip Epoxy Primer** can be tinted in any of the "W" Colors on this Color Chart. This product is fast drying, odorless, bonds well to many flooring surfaces and hides the floor extraordinarily well. Typically, this product is the first coat of a NeverStrip Color System to transform a floor.

**NeverStrip Color** (Thin Film Urethane) is then applied to the epoxy primer with the color being any of the available colors on the Color Chart. Typically, only one coat is needed; although, you may expect more than one coat when choosing a Clear Tint Base color.

**Finally**, the system can be topped off with any one of a number of NeverStrip's clear topcoats including: NeverStrip Gloss, Satin or Matte (Thin Film Water-Based Urethanes), NeverStrip High Solids Urethane or NeverStrip Extreme Performance. The choice of which topcoat to use will be a function of the flooring substrate, desired sheen and performance requirements.

# NeverStrip

FLOOR COATINGS

## Color and Epoxy Primer Color Chart

NeverStrip  
FLOOR COATINGS

[www.NeverStrip.com](http://www.NeverStrip.com)

All Content © 2014 NeverStrip, LLC, All Rights Reserved.

More Sustainable Floors  
on a  
More Sustainable Budget

# NeverStrip

FLOOR COATINGS

## Color and Epoxy Primer Color Chart

Available in 55 vibrant colors with the highest quality color pigments - that can be further enhanced with colored flakes for endless custom floor transformations. You and your designers imagination have virtually no limits. Imagine how a 2 or more color design could transform an old tired floor.



Color applications typically, include a NeverStrip clear topcoat in 1 of 3 sheens (Gloss, Satin, or Matte). This color system is used to rejuvenate and re-color worn synthetic sports floors, Vinyl Asbestos Tile, VCT, and Concrete for a cost effective transformation, with ease of maintenance, yet a high level of sustainability.



C - Clear - Most Transparent (Least Hide)  
 D - Deep - Moderately Transparent  
 W - White - Least Transparent (Most Hide)

**NeverStrip Epoxy Primer is available in "W" colors only.**



**Please Note:**

This color chart is an approximate color guide only. Actual colors will vary under different lighting conditions. Colors should be verified in a small test area prior to application.

Epoxy Primer is only available in "W" colors, in order to offer a complete hide.

NeverStrip recommends multiple containers of colors are blended together to insure color consistency across a project. NeverStrip provides this blending as a service in its facility prior to shipment.